

4 Specification

Material: 20/22 Gauge Domestic Steel (Low Lead Content)
 Photronic Unit Powered by: BL-PP-0023 Auto Sensing Ballast
 Power Input: 120V/.40A-240V/0.21A,50/60Hz
 Power Consumption: 18 Watts (.40 AMPS @120VAC)

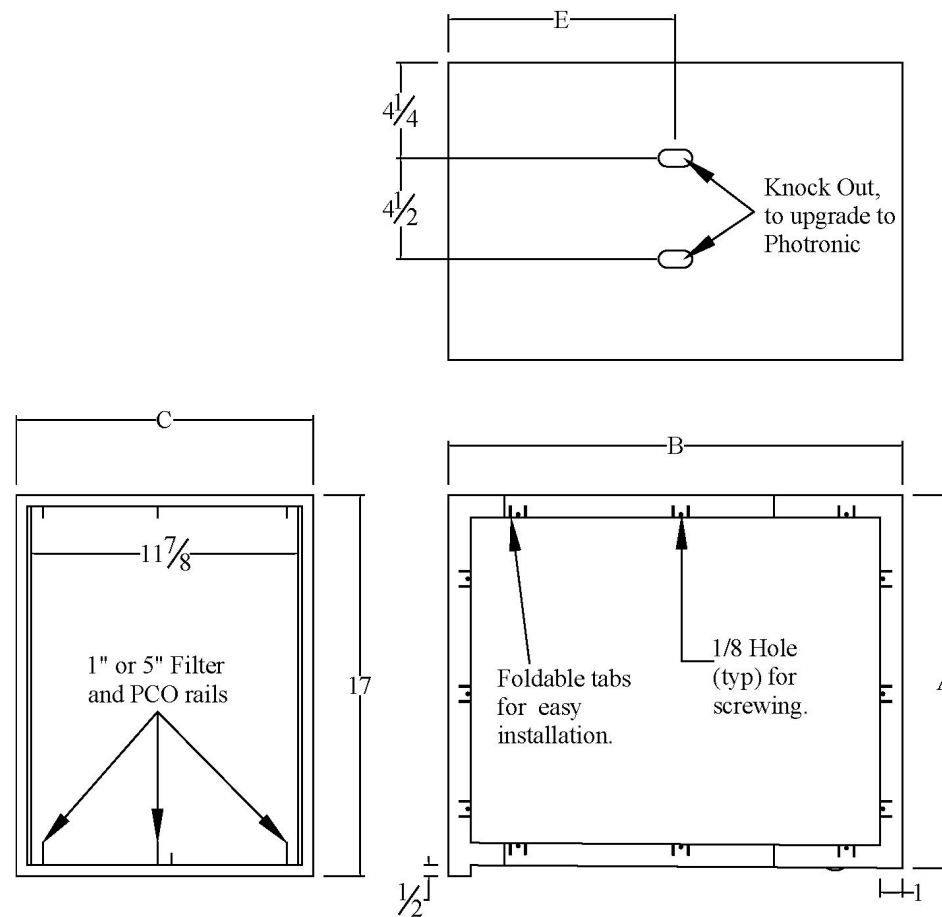
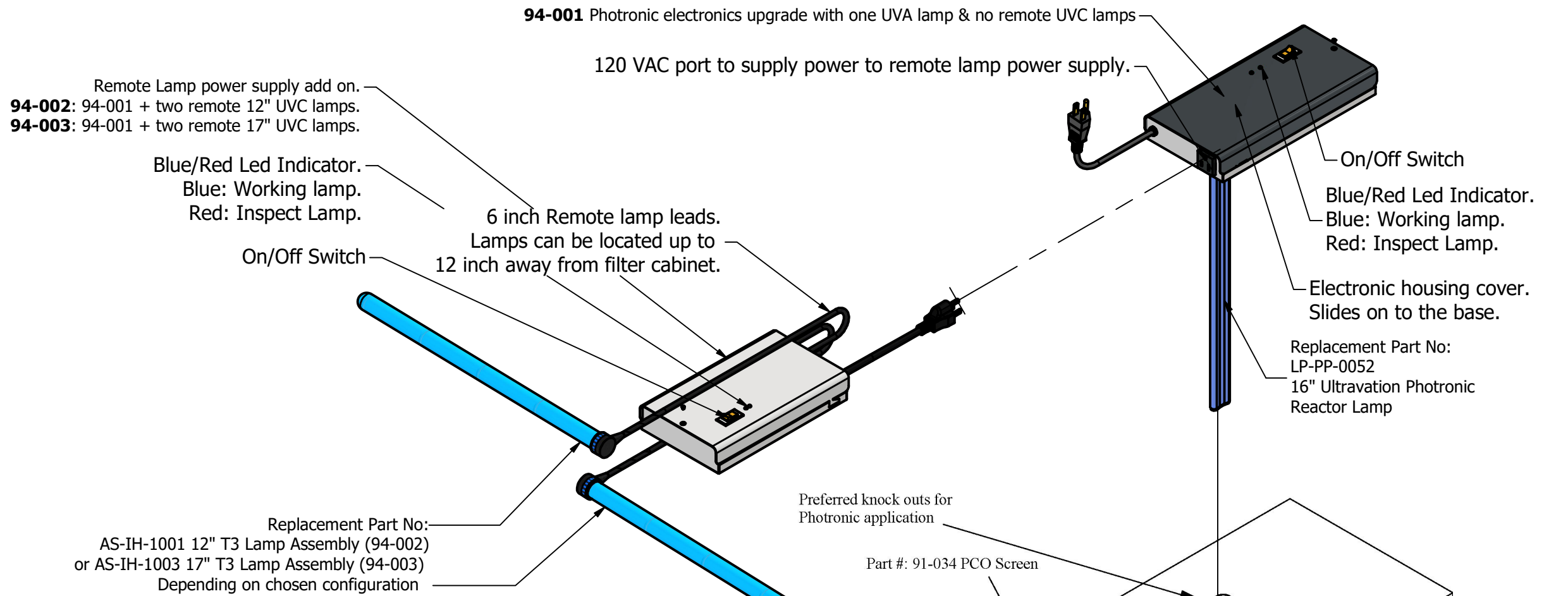
Configure

CABINET SIZES	C/W: 94-001 PHOTRONIC ELECTRONICS UPGRADE WITH ONE UVA LAMP & NO REMOTE UVC LAMPS	C/W: 94-002 PHOTRONIC ELECTRONICS UPGRADE WITH ONE UVA LAMP & TWO REMOTE 12" UVC LAMPS.	C/W: 94-003 PHOTRONIC ELECTRONICS UPGRADE WITH ONE UVA LAMP & TWO REMOTE 17" UVC LAMPS.
20x25x14"	92-001	92-002	92-003
16x25x14"	92-024	92-025	92-026
20x20x14"	92-031	92-032	92-033
16x20x14"	92-034	92-035	92-036

Cabinet Dimensions & Spec

CABINET W/ PHOTRONIC UNITS PART NO:	A	B	C	D	E	REPLACE MENT FILTER (MERV 11)	PRESSURE DROP @ 1200CFM: "X" INCHES OF H2O
92-001, 92-002, 92-003	20 1/2"	25 1/4"	13 1/4"	25"	12 5/8"	91-006	0.05"
92-024, 92-025, 92-026	16 5/8"	25 1/4"	13 1/4"	25"	12 5/8"	91-005	0.08"
92-031, 92-032, 92-033	20 5/8"	20 1/4"	13 1/4"	20"	10 5/8"	91-013	0.08"
92-034, 92-035, 92-036	16 5/8"	20 1/4"	13 1/4"	20"	10 1/8"	91-012	0.17"

All Cabinets have a weight capacity of 200lbs



DRAWN Anik D.	9/12/2022	Ultravation		
CHECKED B. Fowler		67 TUBBS AVE, BRANDON VT-05733. 866-468-8247. www.ultravation.com		
QA		TITLE		
MFG		Photronic Series SpecsSheet		
APPROVED		SIZE	DWG NO	REV
		Custom	Photronic Series Configuration	N/A
		SCALE	N/A	SHEET 1 OF 1