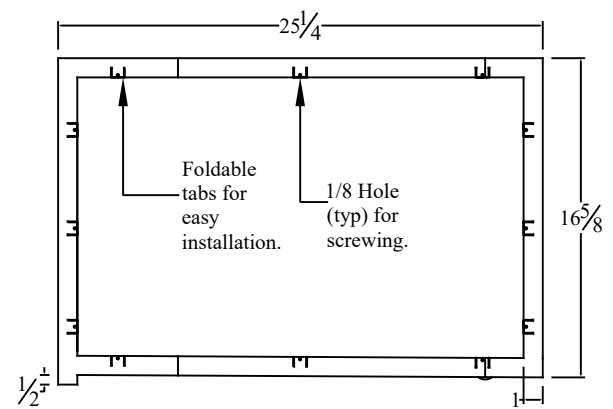
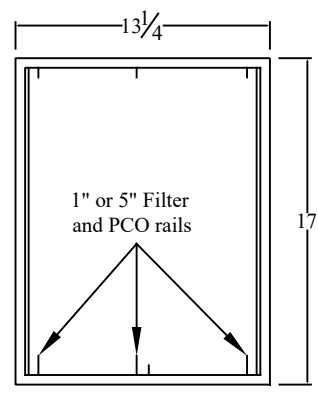
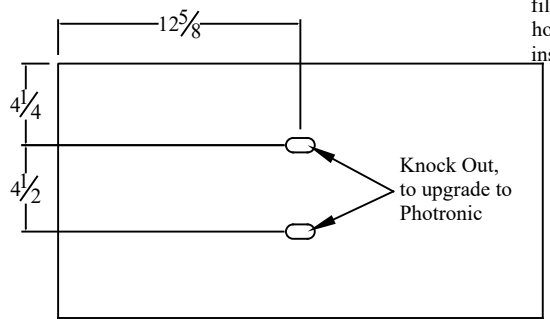
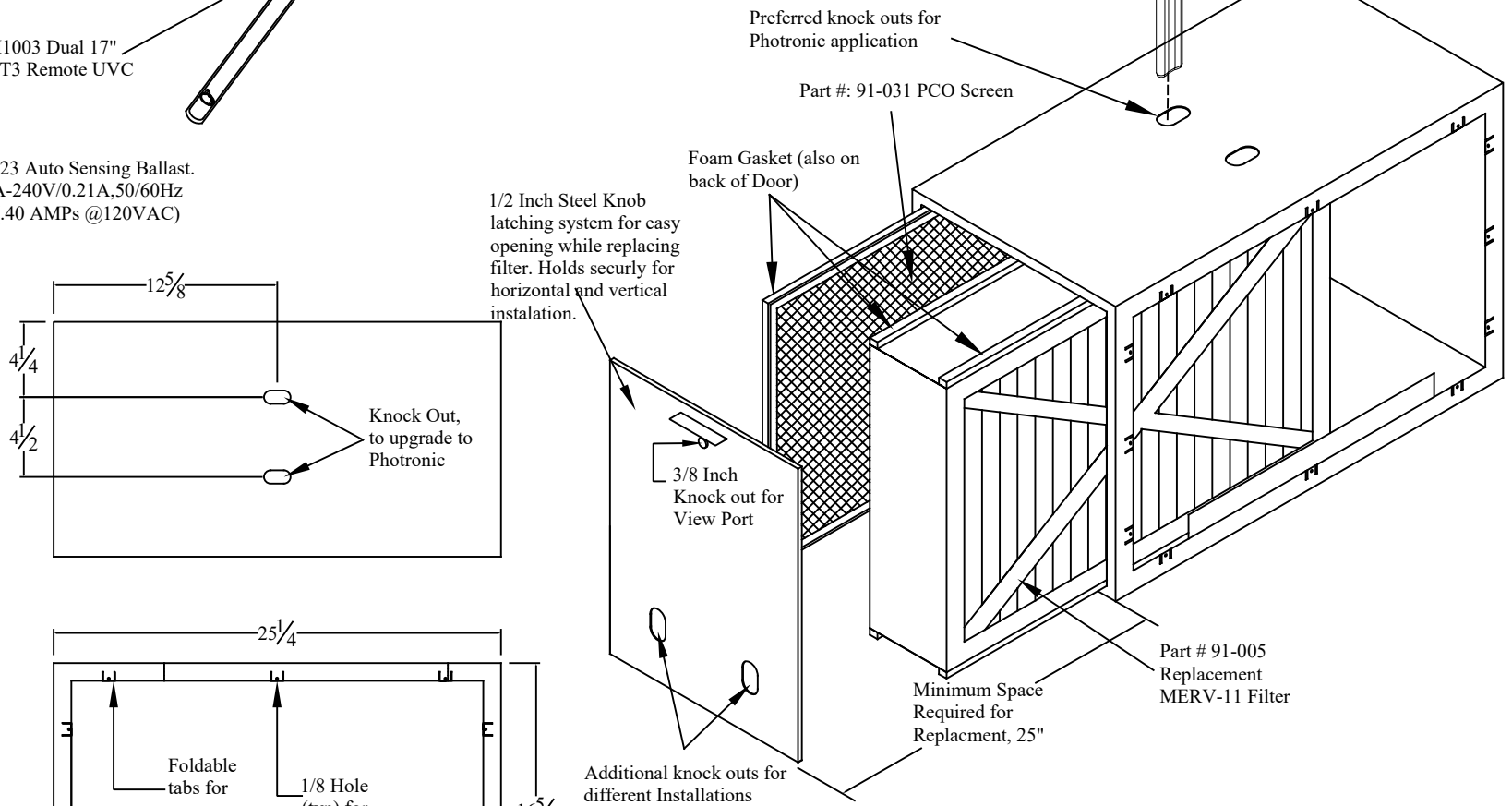
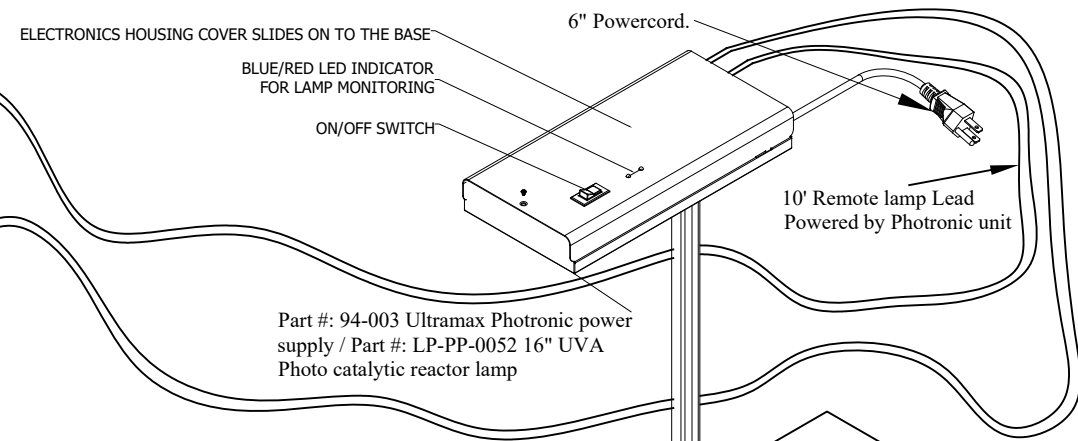


| | |
|---------------------------|--|
| Specifications | |
| Material: | 22 Gauge Domestic Steel (Low Lead Content) |
| Design Weight Capacity: | 100 lbs. |
| Pressure Drop @ 1200 CFM: | .15 Inches of H2O |

Part # ASIH1003 Dual 17" Ultravation T3 Remote UVC lamps.

Photronic Unit
 Powered by : BL-PP-0023 Auto Sensing Ballast.
 Power Input : 120V/.40A-240V/0.21A,50/60Hz
 Power Consumption : 18 Watts (.40 AMPs @120VAC)



Ultravation, Inc.
 67 Tubbs Ave
 Brandon Vermont 05733.
 Ph: 802-247-0034
 Fx: 802-247-0033
 www.Ultravation.com

| | | |
|---|-----------------------|--------------|
| Part #: 92-026 | Drawing #: DC-IH-3056 | Rev -* |
| Description: Photronic Straight Through w/ 16 x 25 x 5" MERV-11 filter, ST style w/ 17" remote UVC Lamps, 120v 60 Hz. | | |
| Date: 11/03/06 | Scale: | Creator: JSM |